



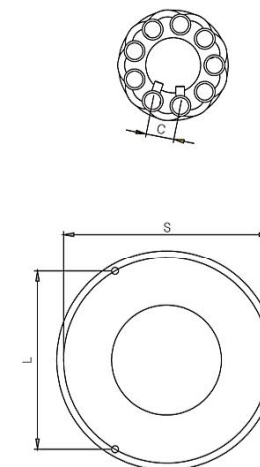
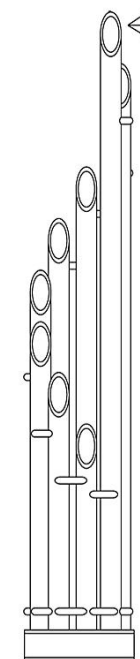
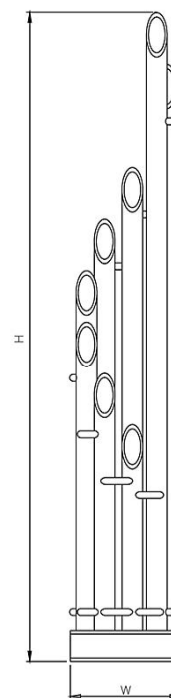
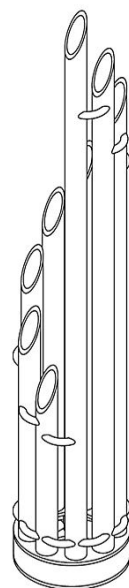
unique

max. working pressure
betriebsüberdruck 10 bar

max. working temperature
betriebstemperatur 95 °C

all dimensions are in
alle masse sind in mm.

connections
anschlüsse 1/2"



material	finish ausführung	installation aufstellung	warranty garantie
stainless steel / edelstahl	satın polished / matt gebürstet	floor standing / boden stehend	10 years / 10 Jahre

Product Code Artikelnummer	Width Baulänge	Height Bauhöhe	Depth Bautiefe	Conn Centers Anschlussachse	Tube Quantity Rohranzahl	Assembly Axis Montageachse		Weight Gewicht	Water Capacity Wasserinhalt	Thermal Power Wärmeleistung		
	W	H	D	C		S	L	kg.	lt.	btu	k/cal	watt
UNQ0360190009	360	1900	360	50	9	340	295	50,5	8,2	12873	2509	2917